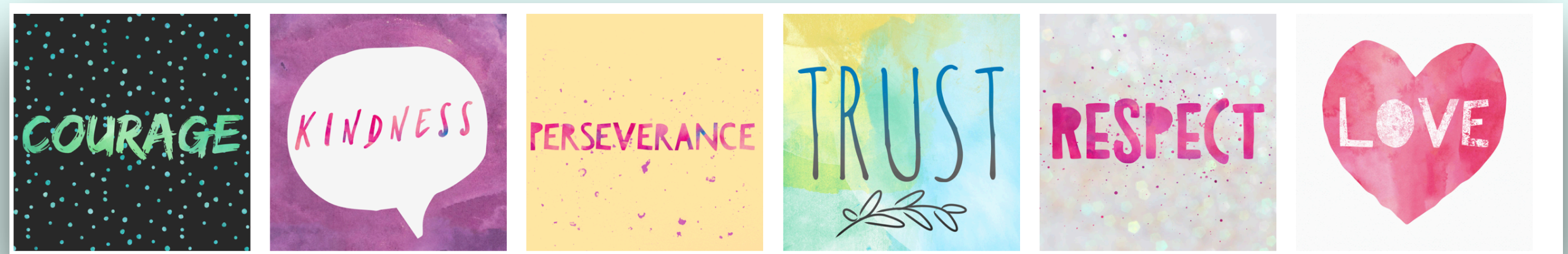
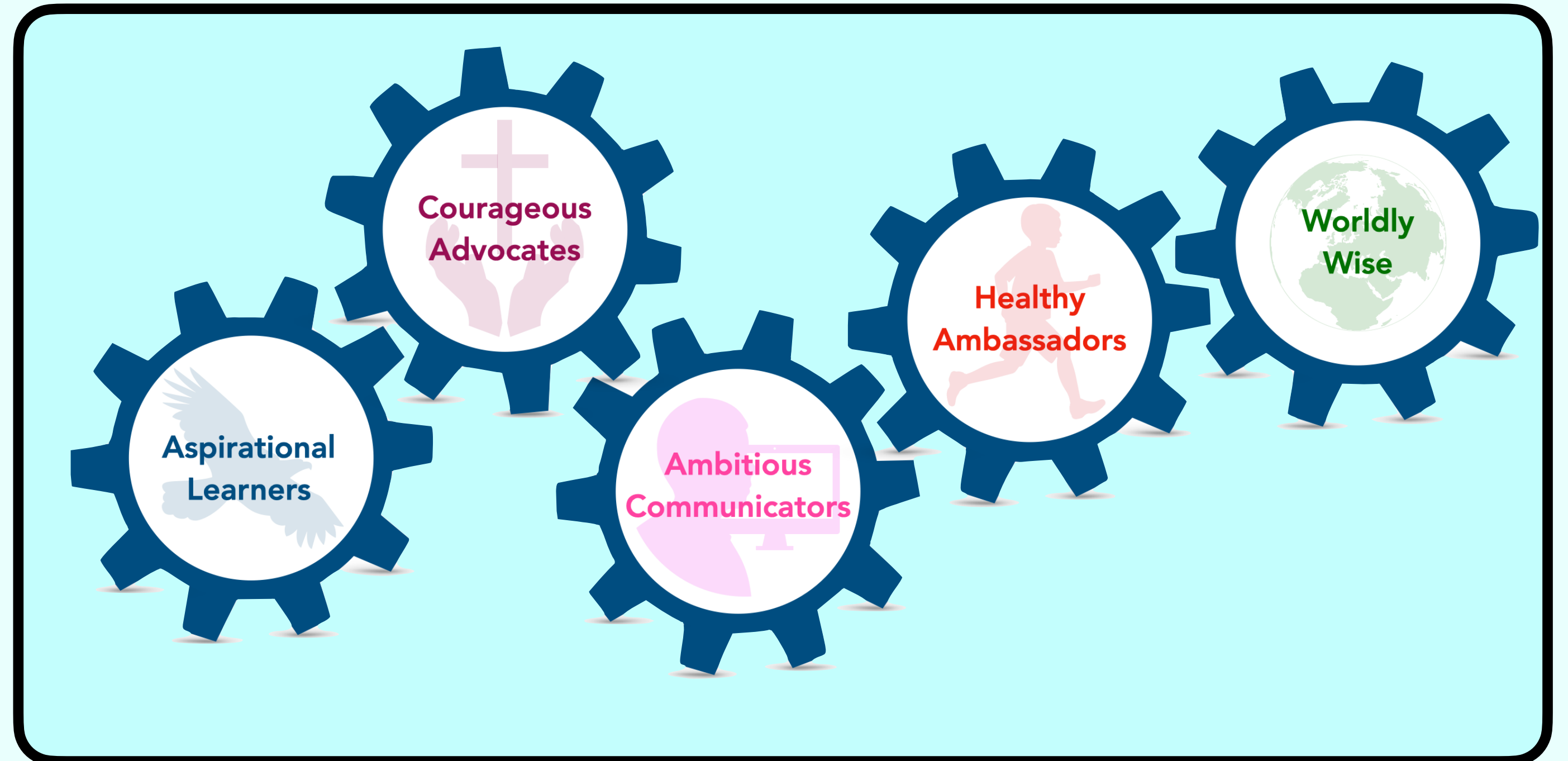


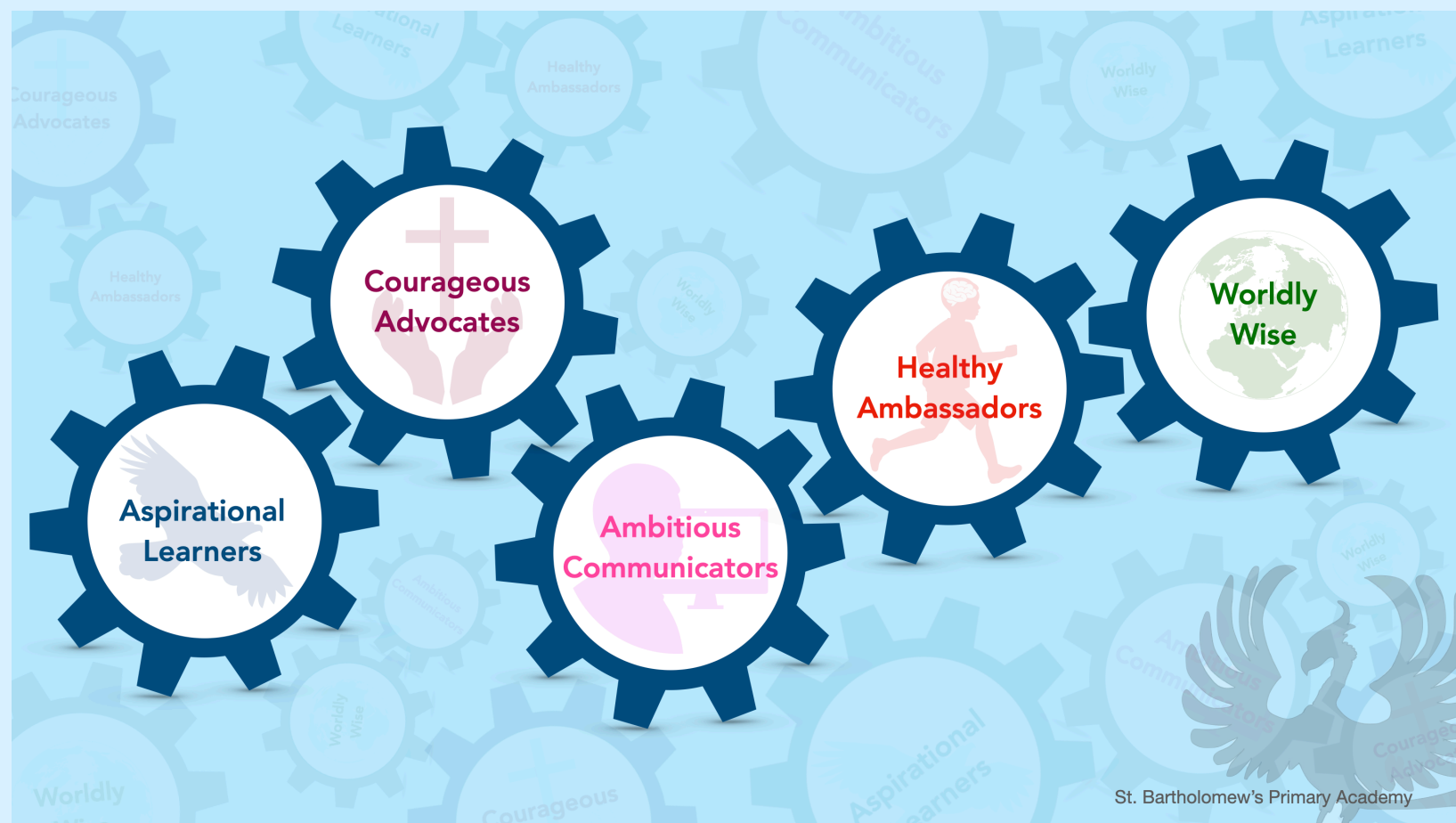


Religion and World Views Flight Path

Hand in hand we learn, we grow, we soar

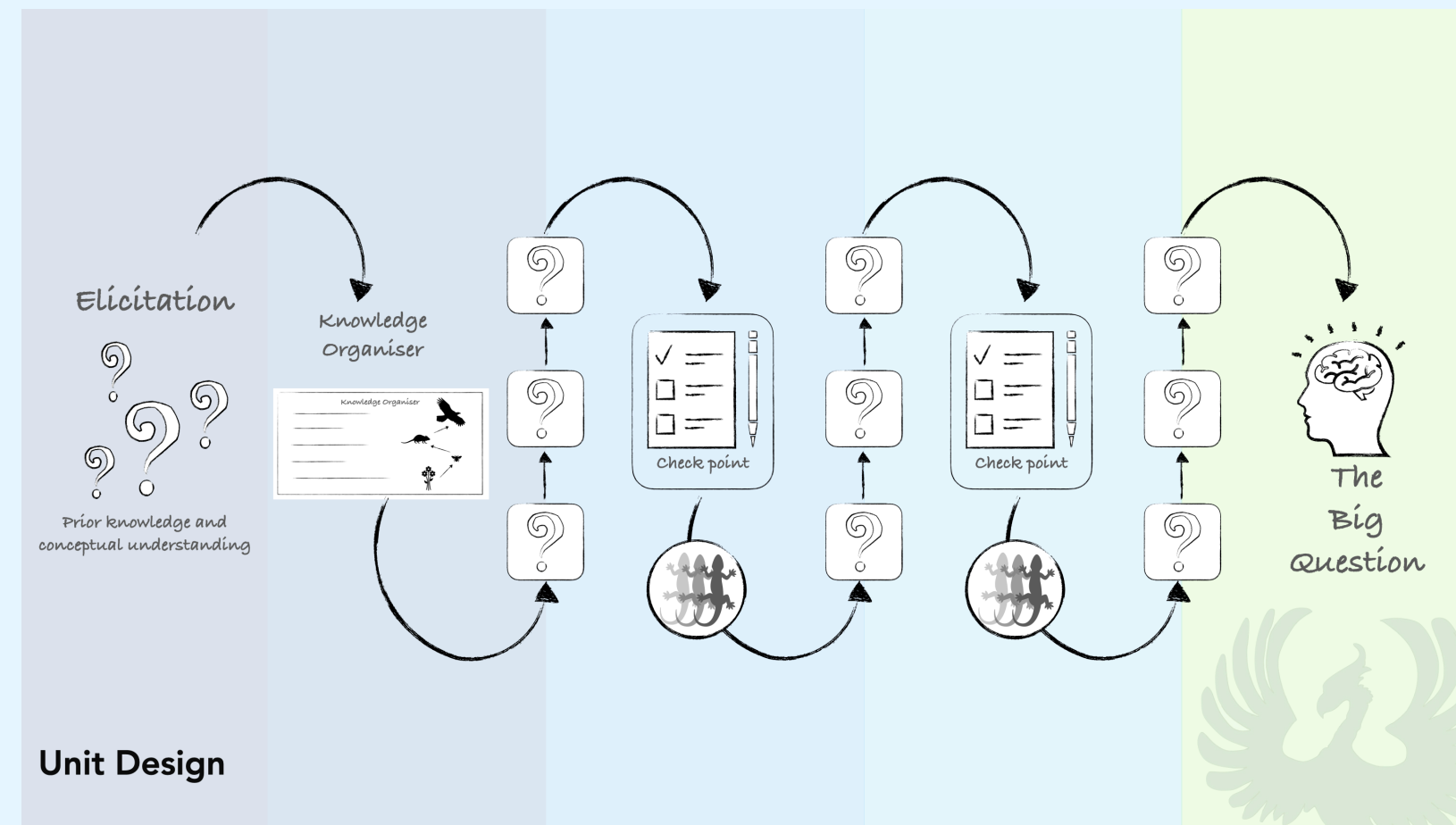


Our Curriculum Drivers



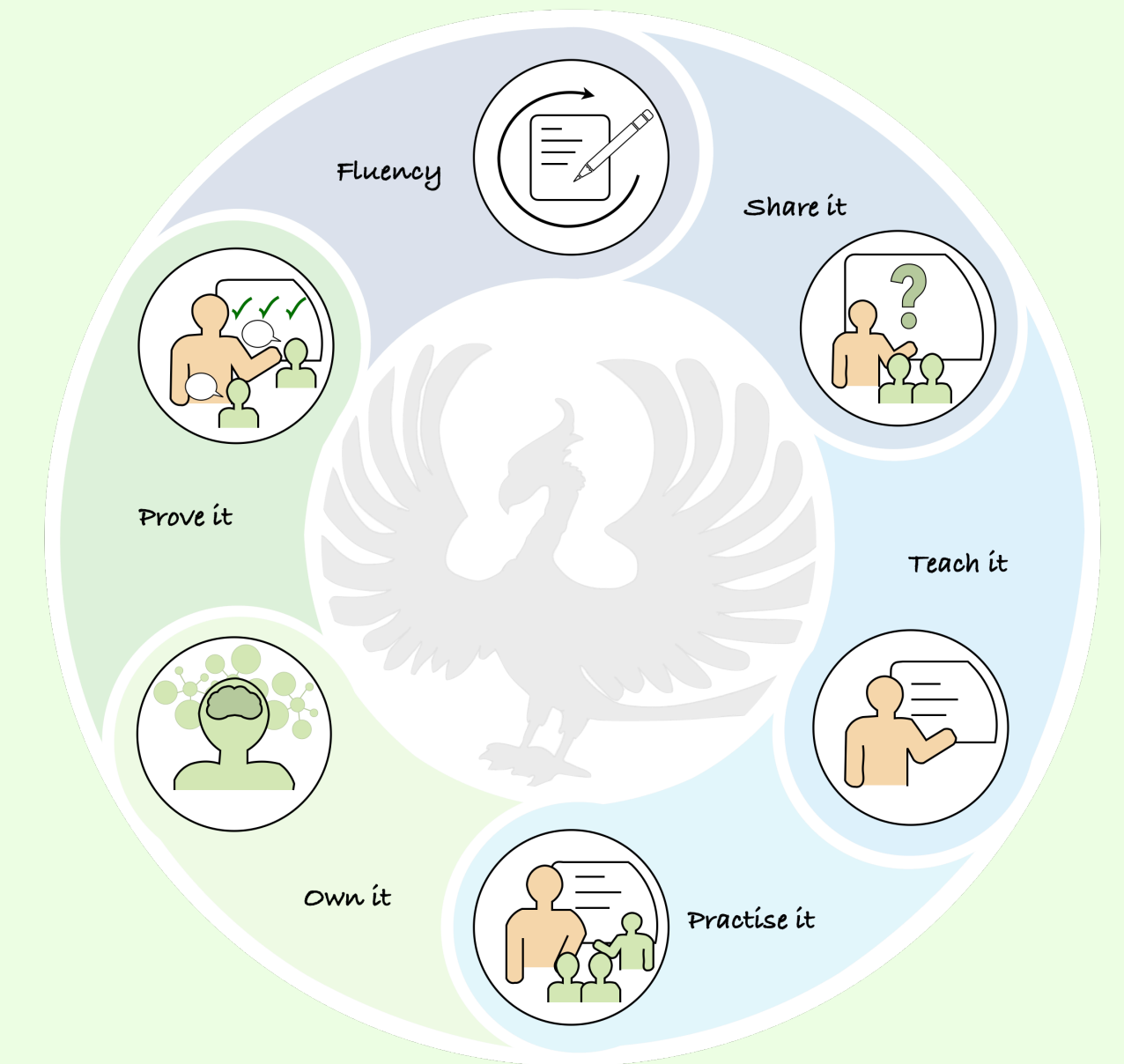
These articulate the ambition of our curriculum and how it will enable children to be confident, successful and ambitious citizens, prepared for life outside of school.

Our Unit Design



These are the principles that teachers adhere to when designing a unit of work, to ensure it builds upon prior learning and leads to secure schema.

Our Lesson Design



This is the structure we follow during lessons to reduce cognitive load and ensure all children are able to succeed.

Curriculum Intent

The Religious Education curriculum at St Bartholomew's provides opportunities for children to explore the lives and religions of those both within and beyond their own experiences. This enables them to grow as respectful and responsible world citizens, as well as connecting the impact that religion has had on Britain's own cultural heritage. R&WV teaching is underpinned by our school Christian vision and values, as well as the British values of democracy, rule of law, individual liberty, mutual respect for, and tolerance of those, with different faiths and beliefs as well as for those without faith.

Children are equipped with the understanding and skills required to be empathetic, considerate individuals who can critically evaluate and reflect upon big questions within core theological concepts. Through creative and investigative approaches to teaching, pupils develop knowledge and understanding of major world religions and world views.

Implementation

At St Bartholomew's, we use The Emmanuel Project to enable children to gain a coherent understanding of the beliefs and practices of major world religions. RE&WV is taught weekly in line with Church of England Statement of Entitlement: this should aim to be close to 10% but must be no less than 5% in key stages 1-4. Christianity as the majority religion studied in each year group and is at least 50% of the RE&WV curriculum time.

Teaching provides pupils with a safe space to discuss and debate religious, spiritual and philosophical ideas and provide them with the tools to be curious, ask appropriate questions and express their views sensitively. Learning is creative and inspiring and enables children to use subject specific vocabulary. Pupils participate in activities which promote a greater understanding of their place in the world, and their rights and responsibilities as global citizens.

Impact

By the time students leave St Bartholomew's in Year 6, they will be ready to enter secondary school able to understand the importance of religion and world views in people's lives. They will be able to ask questions of themselves about their religious and non-religious influences, and how they impact their way of life. They will have a rich religious vocabulary with which to compare different religions and world views, and will be able to understand how belonging to a faith or world view might influence their life or the lives of others. They will have a deep understanding of Christian beliefs and celebrations as well as beliefs and celebrations that Jewish people, Muslims, Sikhs, Hindus, Buddhists and Humanists hold.

In order to achieve this final outcome, milestones will be met across each key stage.

In EYFS, pupils will engage with the Christian religion by exploring why God is important to Christians, and learning the Christmas story, as well as encountering a story from the Muslim faith by the end of the Autumn term. At the end of the Spring term, pupils will be able to express how they can help others and explore why Christians celebrate Easter, as well as encounter a story from the Sikh or Buddhist faith. By the end of the Summer term, pupils will express why they are unique and precious and explore how we can care for our world, as well as encounter celebrations from the Hindu or Jewish faith.

At the end of Key Stage 1, pupils will have been introduced to all seven of the 'Key Concepts' through studying Christianity and Judaism and encountering the religion of Islam. Children will begin to take this isolated information and make links between religions and their own beliefs by beginning to think like theologians. They will know have heard stories from both the Old Testament and the New Testament as well as parables that Jesus told. They will begin to understand why faith stories, artefacts and symbols are important to religious people and will be able to share what is also important to them. They will practise respectful questioning when exploring the beliefs and faiths of others.

By the end of Lower Key Stage 2, pupils will have an understanding of the expectations a believer of Christianity, Islam and Hinduism will uphold. They will be able to talk about how religious and spiritual ideas are expressed in different religions, including use of symbols, celebrations and ways of worship. Pupils will also begin to make links with how religious people respond to global issues and how they respond to them themselves.

In order to evaluate the level to which children are retaining knowledge and are able to apply their learning to a range of situations, we use a range of techniques.

- Regular feedback, marking and pupil voice feedback.
- Subject monitoring including book scrutinies.
- Regular low stakes assessment, using a range of creative approaches.
- Cross-curricular opportunities to apply skills in other curriculum areas.



Emma Yarlett's Big Frieze illustrates the 'big story' of the Bible, originally produced for Understanding Christianity, it enables children to visually explore key stories, events and concepts from the Bible. We refer to this in RE&WV and within Collective Worship to build up an understanding of the Bible and key events that Christians still celebrate today.

The Emmanuel Project

St. Bartholomew's now uses The Emmanuel Project as its sole R&WV curriculum. The curriculum units focus on key beliefs and concepts of six different faiths and a non-religious worldview. It follows an enquiry-cycle model; within each unit, children will engage, enquire and explore a key question, before evaluating and expressing their own ideas. Each religion or world-view is revisited across their St. Bartholomew's journey to enable a well-balanced knowledge and understanding of different world views and religions.

To find out more about The Emmanuel Project, please follow this link to the website:

<https://www.cofesuffolk.org/schools/school-leaders/religious-education/emmanuelproject>

