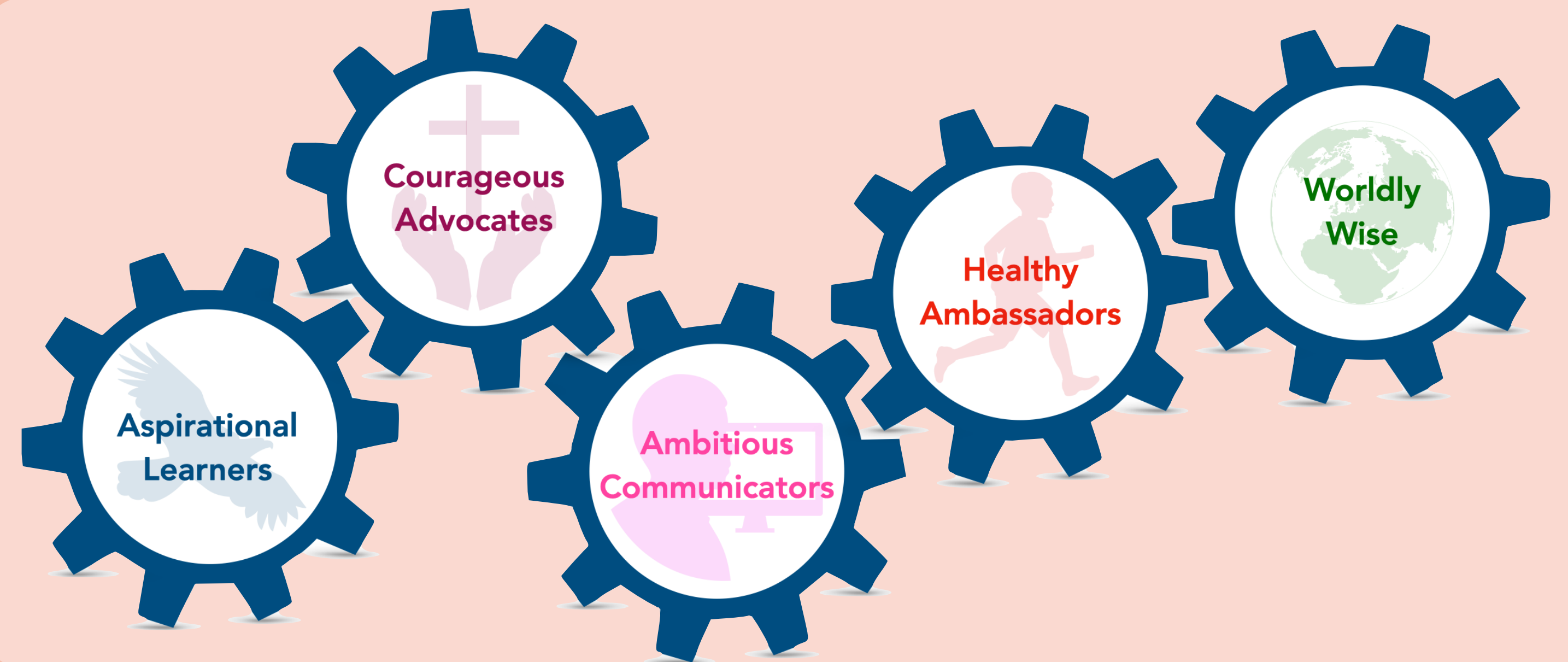
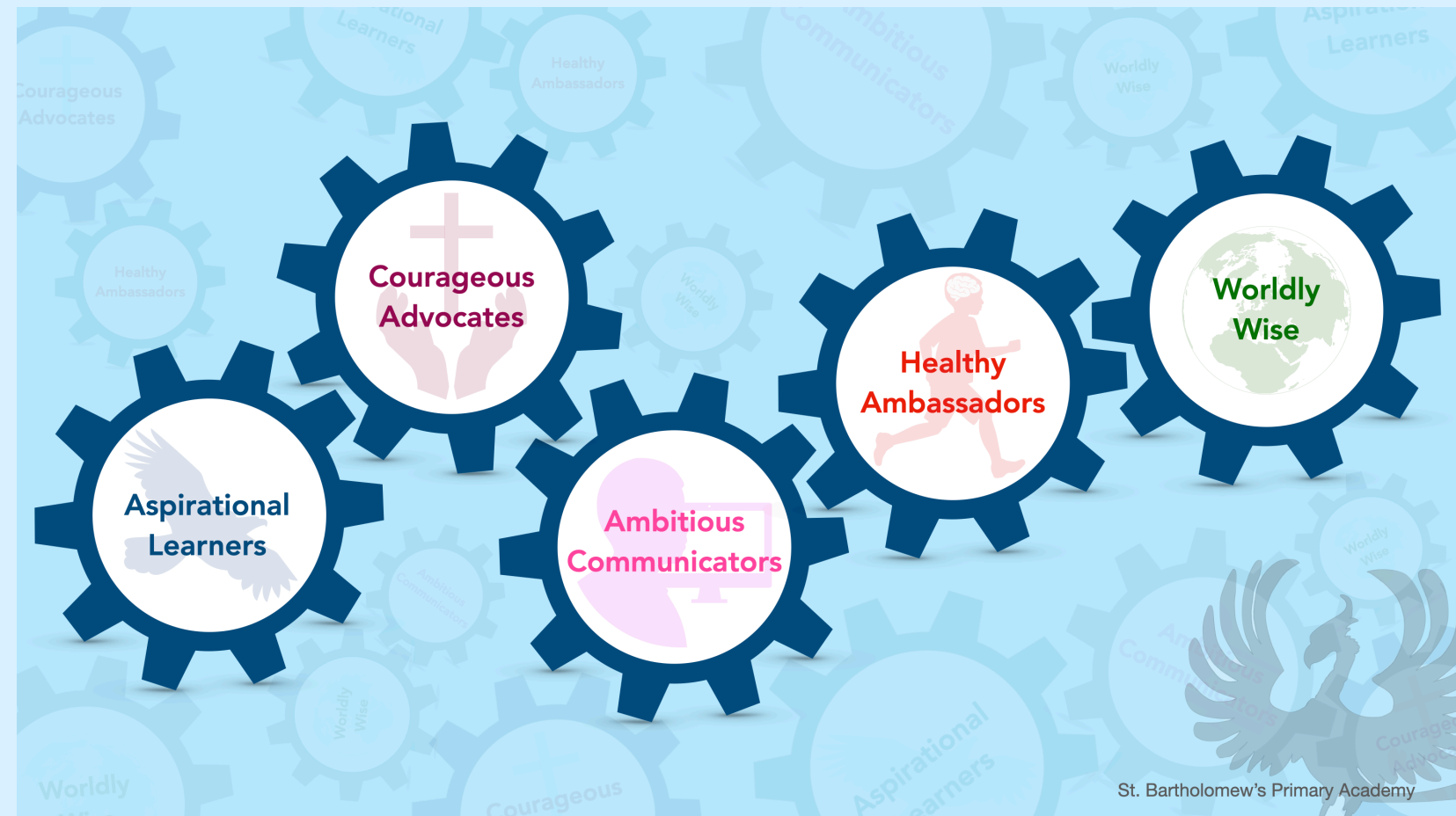


# Personal, Social and Health Education (PSHE) Flight Path

Hand in hand we learn, we grow, we soar

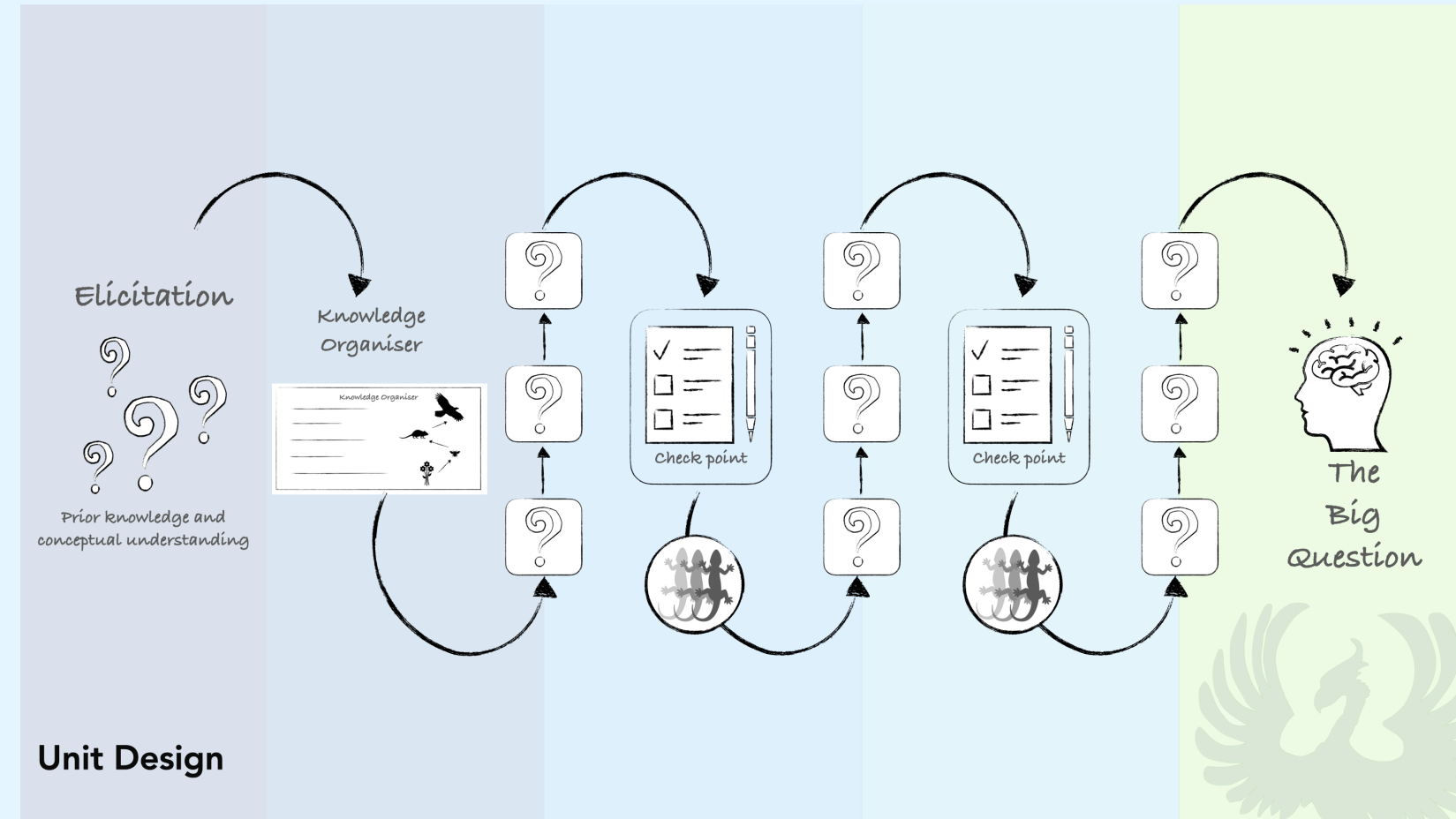


## Our Curriculum Drivers



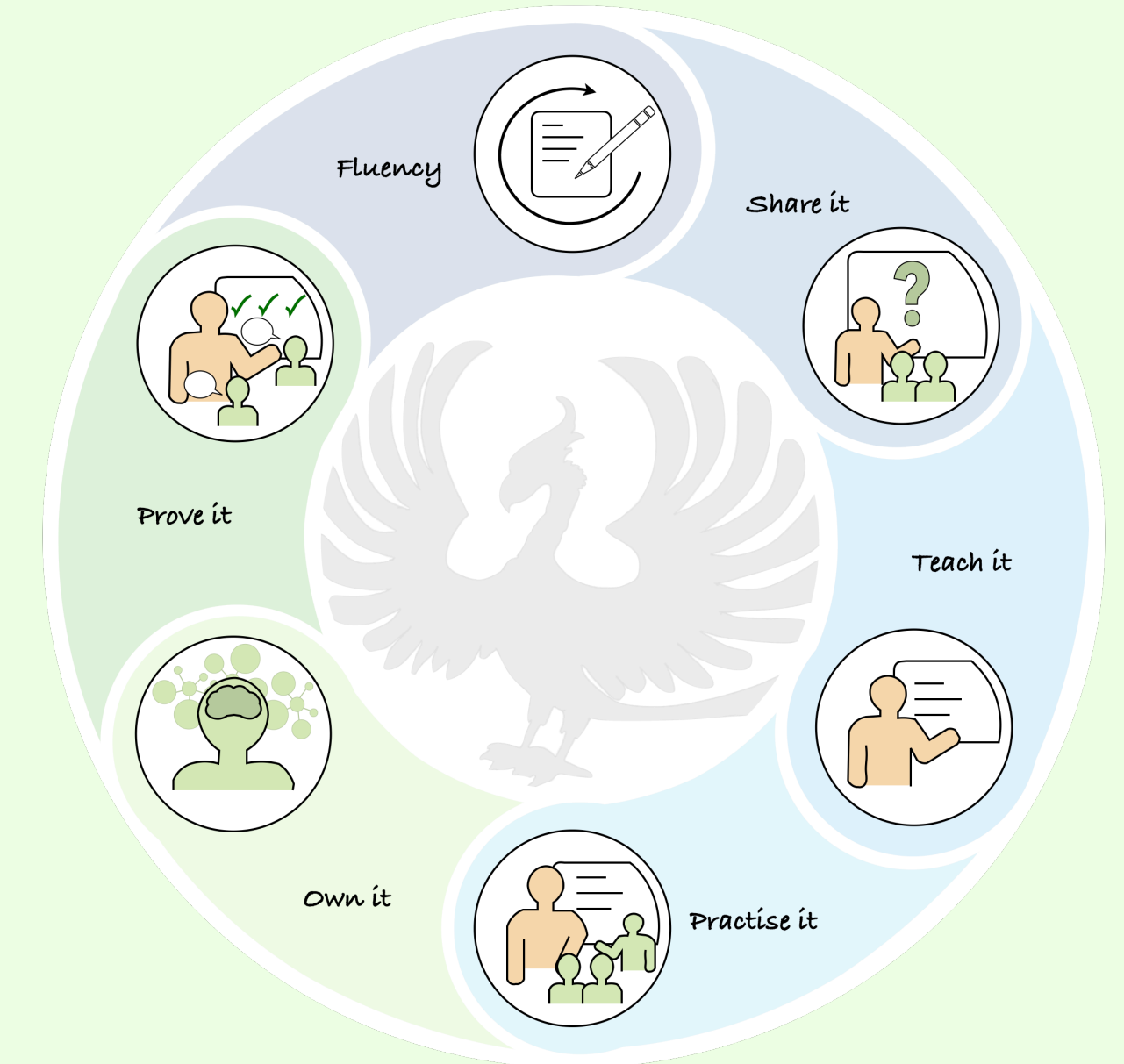
These articulate the ambition of our curriculum and how it will enable children to be confident, successful and ambitious citizens, prepared for life outside of school.

## Our Unit Design



These are the principles that teachers adhere to when designing a unit of work, to ensure it builds upon prior learning and leads to secure schema.

## Our Lesson Design



This is the structure we follow during lessons to reduce cognitive load and ensure all children are able to succeed.

### Curriculum Intent

At St Bartholomew's our PSHE (Personal, Social, Health and Economic Education) and RSE (Relationships and Sex Education) lessons support our children in becoming healthy, independent and responsible members of society. We support the children to understand physical, personal and social development, whilst tackling many of the moral, social and cultural issues that are part of growing up. We believe our children should be able to talk openly and their questions are answered appropriately, sensitively and honestly in a way that respects the diversity of cultures and families in our school. Pupils are encouraged to develop their sense of self-worth by playing a positive role in contributing to school life and the wider community, considering British values and our school values of courage, kindness, perseverance, trust, respect and love.



Me and My Relationships



Rights and Respect



Growing and Changing



Keeping Myself Safe



Valuing Difference



Being my Best

### Implementation

PSHE and RSE is taught through a structured framework called SCARF (Safety, Caring, Achievement, Resilience and Friendship); a comprehensive PSHE, RSE and wellbeing programme which aligns with the National Curriculum and ensures schools meet statutory requirements. During each school year, the children will develop their understanding and skills, through a sequence of lessons which build on prior knowledge, concepts and experiences. Topics involve a mixture of role-play, drawn, written and discussion based tasks, as well as opportunities for group and independent work.

In addition to the statutory learning, the children at St Bartholomew's participate in a range of exciting and interactive experiences, such as focussed learning days/ weeks, and visits from relevant members of the community. Learning is personalised to reflect the diverse issues the children at St Bartholomew's are likely to encounter living in and around Royal Wootton Bassett.

## Impact

A variety of strategies are used to measure the impact of PSHE at St Bartholomew's Primary Academy:

- Annual 'deep dives' into PSHE to monitor consistency, improvement, and action points.
- Pupil voice opportunities so leaders can listen to pupil opinions and reflections on their PSHE learning journey at St Bartholomew's.
- Lesson observations to ensure PSHE teaching is of a high standard and quality.
- Comparisons between children's pre and post assessment activities in order to highlight progress and show gaps in knowledge or understanding that can be addressed.
- Answers to children's learning questions and responses to activities in books and in lessons, reflected upon to help inform teacher assessment.
- Analysis of half-termly class summative assessments to highlight gaps in knowledge and understanding with an aim for this to inform future planning.

## Enhanced Curriculum Opportunities

### **Walk Safe**

Wiltshire Council's Road Safety Training

### **Bikeability**

Cycling safety training

### **Life Education Base**

Life skills sessions

### **Hello Yellow Day**

Young Minds mental health awareness

### **Anti-bullying Week**

A week dedicated to anti-bullying awareness.

### **Children's Mental Health Week**

A week focussed on enhancing children's mental health and wellbeing.

### **Safer Internet Day**

### **Fire Safety**

Dorset & Wiltshire Fire and Rescue Service

### **Good Citizenship**

**Additional Sun Safety lesson for all classes.**

### **Guest speakers**

Olympic medallists, Childline professionals, scientists, inventors, health care professionals etc.

### **Visitors from members of local community**

Nurses, doctors, dentists, firemen and women, police officers, postal workers etc.