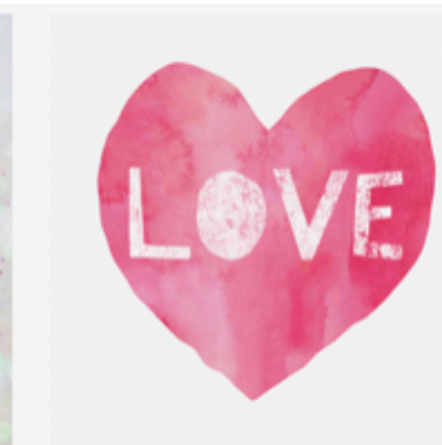
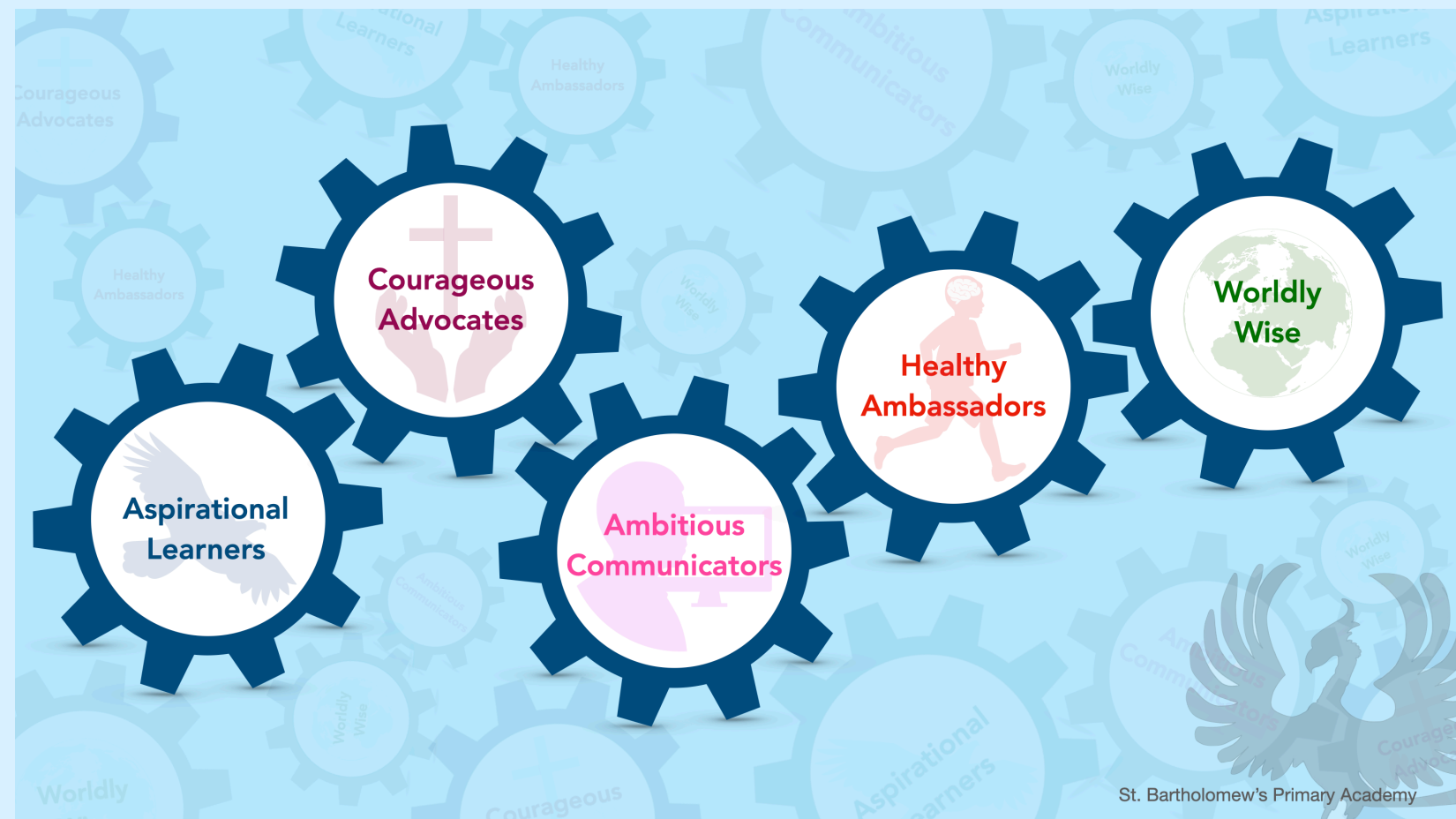


# Physical Education (PE) Flight Path

Hand in hand we learn, we grow, we soar

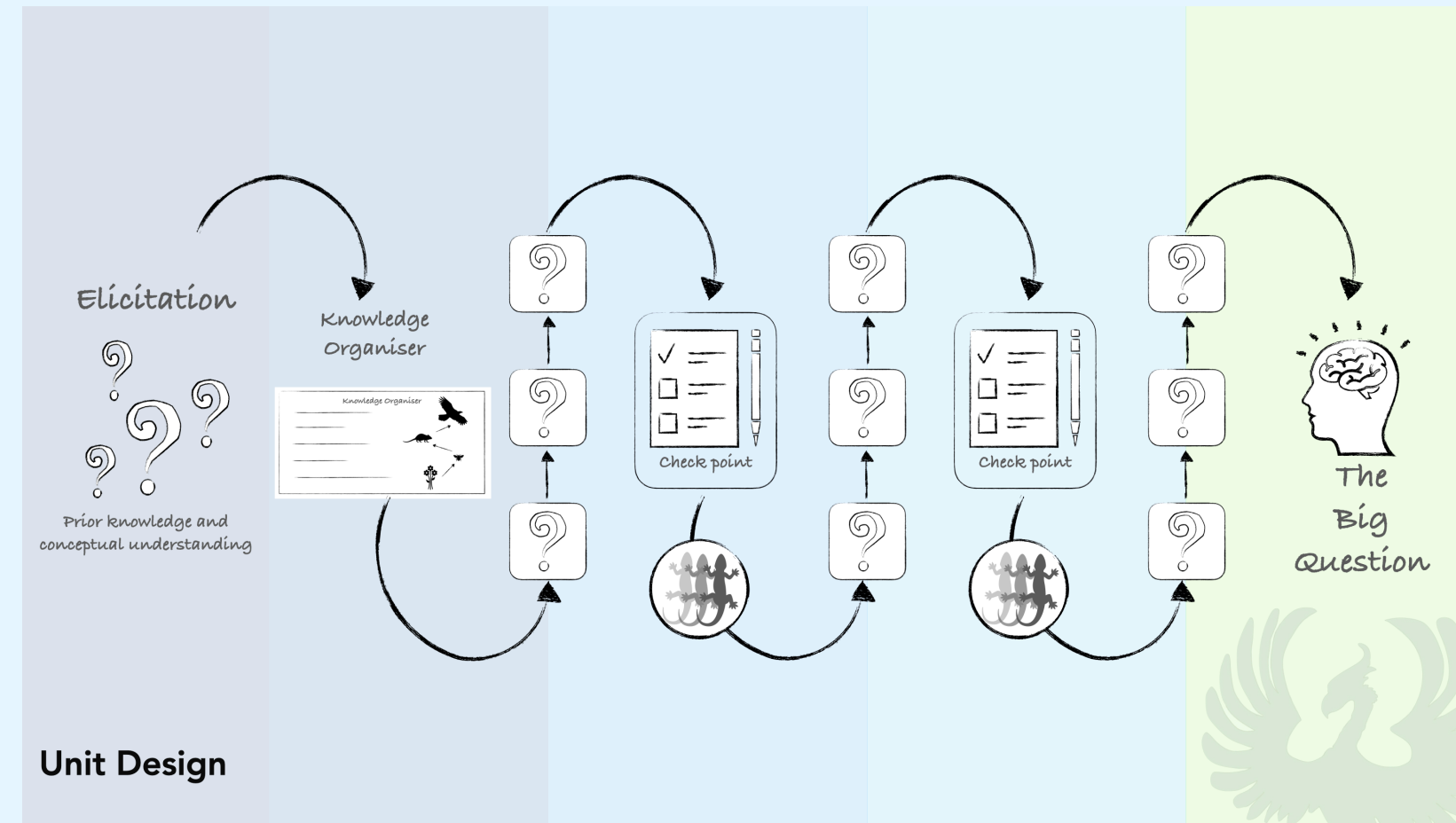


## Our Curriculum Drivers



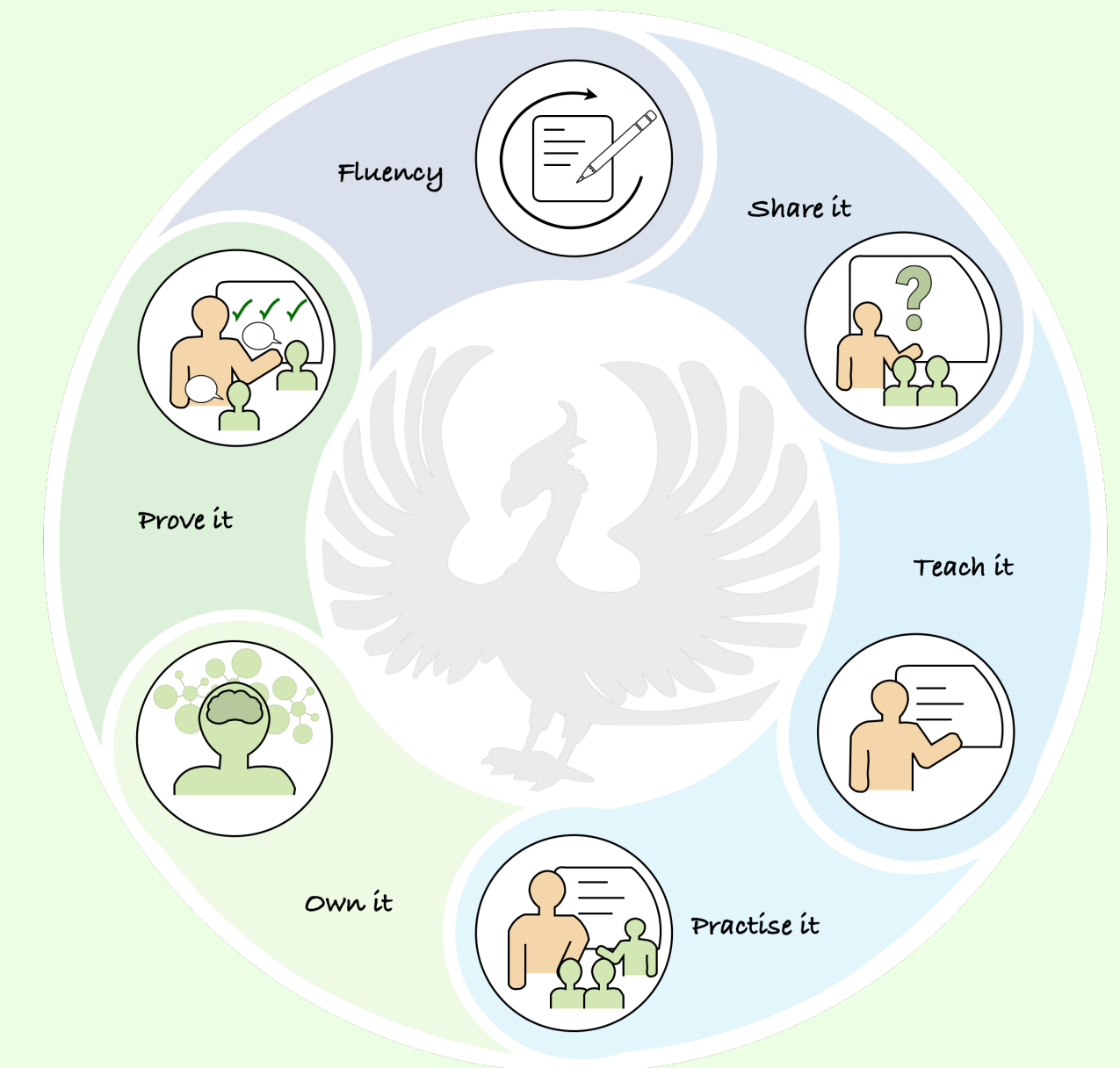
These articulate the ambition of our curriculum and how it will enable children to be confident, successful and ambitious citizens, prepared for life outside of school.

## Our Unit Design



These are the principles that teachers adhere to when designing a unit of work, to ensure it builds upon prior learning and leads to secure schema.

## Our Lesson Design



This is the structure we follow during lessons to reduce cognitive load and ensure all children are able to succeed.

## Curriculum Intent

At St Bartholomew's, we believe that Physical Education (PE) is essential for children's social, emotional, physical and mental wellbeing. It is our intention for all pupils to receive high-quality PE and learning opportunities that lead children to achieving their personal best. We work towards encouraging children to make healthier lifestyle choices, develop key life skills and to show excellent sportsmanship. We aim for all children to be physically active for sustained periods during the school week. We also aspire for all children to swim at least 25 metres before leaving primary school.

## Implementation

We use the iMoves programme to deliver PE at Bartholomew's. During the school year the children will develop their understanding and skills in all areas of PE.

Through the teaching of PE we aim to:

- develop team work and encourage children to work and play with others in a variety of different situations
- have fun and experience success in sport
- develop children's physical skills increasing control and coordination
- encourage good life long sporting attitudes
- apply basic rules
- teach children to analyse and evaluate a range of physical activities
- experience positive competition
- catch up swimming in Year 6

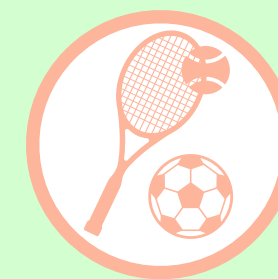


## Impact

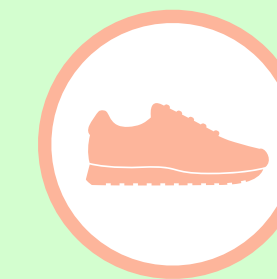
We use a variety of strategies to evaluate the PE knowledge and skills:

- CPD to ensure that teacher pedagogy and assessment is secure
- Regular verbal feedback and pupil voice
- Subject monitoring including lesson observations

In addition to the planned teaching and learning of PE we also provide a variety of other opportunities to experience sport and PE. We take part in numerous cluster events which are competitive and non-competitive against other schools in the area. We invite in guest speakers including olympian Lizzy Arnold and members of the Swindon Wildcat Ice Hockey team. We encourage a variety of sports including skipping, climbing and caving and have team building days with H5, Forest School sessions and fencing groups. We also have our annual celebration of PE on sports day. Our Year 6 children work alongside sports coaches to complete the Play Maker Award and support the KS1 children in being active at lunchtime.



Games



Athletics



Gymnastics



Outdoor and Adventurous



Dance



Swimming