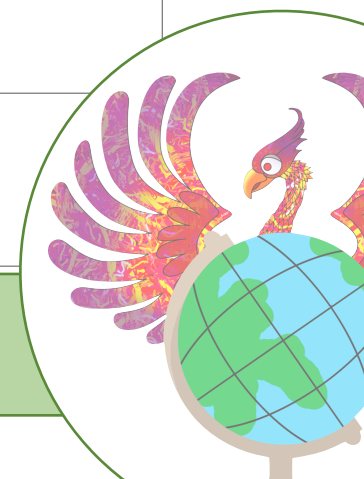




Geography Flight Path - Year 4 - Different Places, Similar Lives



Subject: Geography	Unit: Different Places, Similar Lives	Year: 4	Term: 1	Key Vocabulary (max. 10) <i>*indicates etymological link</i>
Big Question: How am I linked with other people and environments in other places?				Environment – the surroundings in which a person, plant or animal live. Climate – the average weather conditions in a certain place. Feature – a distinctive aspect of something. Population – the amount of people that live in a place. Infrastructure – the basic physical structures and facilities of a place.
National Curriculum objectives covered: Locate the world’s countries, using maps to focus on Europe (including the location of Russia) and North and South America, concentrating on their environmental regions, key physical and human characteristics, countries, and major cities. Understand geographical similarities and differences through the study of human and physical geography of a region of the United Kingdom, a region in a European country, and a region within North or South America.				
Key knowledge: Finland is far from the equator. During Spring and Summer, it is light for 24 hours a day and during winter they can have almost no sunlight in Finland. Chile is close to the equator. Chile has warm summers and cool winters. Royal Wootton Bassett has wet, warm summers and wet, cold winters.				
Key Locations of Study UK & British Isles: Royal Wootton Bassett				Worldwide: Kokkola, Finland Concepcion, Chile



Geography Flight Path - Year 4

Lesson 1	Lesson 2	Lesson 3	Lesson 4	Lesson 5	Lesson 6
LQ: What are the significant features of Royal Wootton Bassett?	LQ: What are the significant features of Kokkola, Finland?	LQ: What similarities and comparisons can I draw between Kokkola and Royal Wootton Bassett?	LQ: What are the significant features of Concepcion, Chile?	LQ: What similarities and comparisons can I draw between Concepcion and Royal Wootton Bassett?	LQ: How am I linked with other people and environments in other places?
I know that:					
RWB is in England, which is in UK. RWB has warm, wet summers and cold, wet winters. RWB has strong transport links. RWB is a rural market town. RWB has a population of around 13,000 people.	Kokkola is in Finland, which is in Europe. Kokkola has warm summers and cold winters. Kokkola has strong transport links. Kokkola is a coastal city. Kokkola has strong trade links. Kokkola has a population of around 40,000 people.	Countries can be different due to their human and physical features.	Concepcion is in Chile, South America. Concepcion has warm summers and wet winters. Concepcion is a coastal city. Concepcion is close to the Andes mountain range. Concepcion has strong transport links. Concepcion has a population of around 900,000.	Countries can be different due to their human and physical features.	Countries can be different due to their human and physical features.



Geography Flight Path - Year 4

I Can:					
Identify important features of RWB, England	Identify important features of Kokkola, Finland.	Explain similarities and differences between Kokkola and RWB.	identify important features of Concepcion, Chile.	Explain similarities and differences between Concepcion and RWB.	Make comparisons between my local area and two others across the world.

